

OPERATING INSTRUCTIONS (EN)

POWER TWISTER (T865101)



I. PUTTING INTO OPERATION

- The compressor used has to be able to produce a constant air pressure of minimum 4 bar and maximum 8 bar.
- The adaptors and fasteners have to be sealed with Teflon tape and have to be tightened.
- Cleaning agents should not be aggressive and need to be sufficiently liquid to be aspirated and sprayed without problem.
- The operator of the gun has to read thoroughly this instruction manual.

If there is a manufacturing error the first time you use the gun. If your Power Twister doesn't work, it has to be returned to the vendor ASAP. The gun has to be in the original box with a clear explanation of the presumed failure. The returned gun has to be clean and almost new. If the returned gun is dirty, if it has signs of impact (especially on the blue rotating ball) or if the gun shows traces of wear, it cannot be considered as a manufacturing error.

II. OPERATING INSTRUCTIONS

- When using the Power Twister, you must observe the following safety instructions: do not use aggressive products, always wear safety gloves, face and eye-protection when handling the gun.
- When using the Power Twister, you must avoid contact between the blue rotating ball in the cleaning spout and rough edges or pieces that endanger the working of the gun (seat handle, gear control lever...).
- When filling the bottle, avoid dirt falling in. This can cause the gun to block and damage the motor severely.
- When your gun starts to lose power or stop altogether, use warm water to loosen any dirt, grease or any other foreign substances from the motor.

A dirty gun, which is not cleaned after use or in which cleaning agent is stored, will have a limited lifetime.

1. Remove loose dirt from the surface you wish to clean (brush or vacuum clean).
2. Turn the blue rocker lever into the vertical position to activate the (cleaning) liquid in the bottle.
3. Important: hold the cleaning spout at a distance of only 1-3 cm from the surface you are cleaning and at an angle of approx. 45°.
4. Press the "trigger" all the way; move the Power Twister slowly in circular motions over the surface you are cleaning.
5. Turn the blue rocker lever into the horizontal "air only" position, press the trigger and dry the surface you have cleaned.
6. To remove any remaining moisture, wipe the cleaned surface with a dry cloth.

III. MAINTENANCE INSTRUCTIONS

A. To be repeated EACH TIME THE INSIDE OF THE NOZZLE IS DIRTY

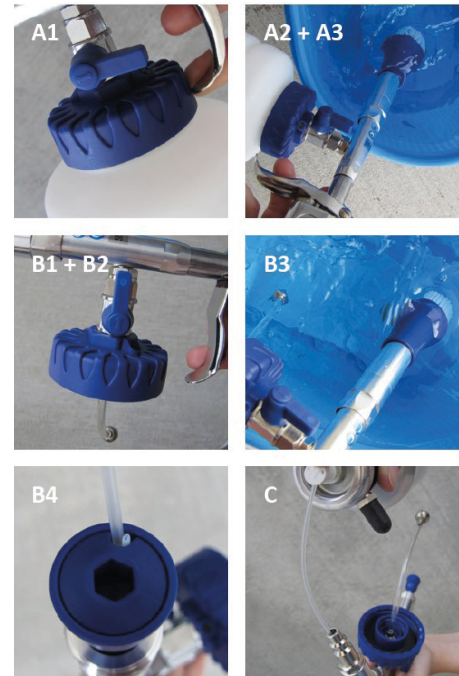
1. Turn the blue rocker lever into the horizontal „air only“ position.
2. Hold the nozzle of your Power Twister in a bucket with clean water.
3. Press the trigger all the way for 3 seconds in order to remove any soiling from the nozzle.

B. EACH TIME you use your Power Twister

1. Remove the bottle with the remaining product.
2. Turn the blue rocker lever into the vertical “product” position.
3. Hold the nozzle AND suction tube with filter in a bucket with clean water and press the trigger for 10 seconds.
4. Lubricate the internal tube with some “clean” multifunctional penetrating lubricant and press the trigger again for 10 seconds.

C. EVERY 15 DAYS (when used intensively) or EACH MONTH

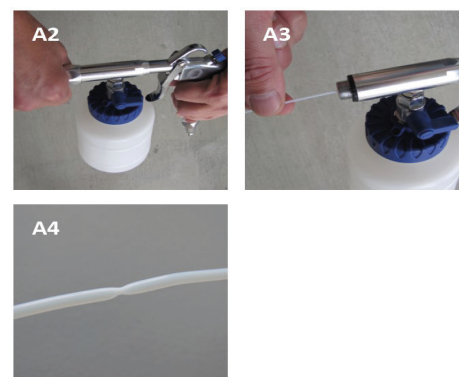
Lubricate the compressed air inlet with a bit of multifunctional penetrating lubricant and press the trigger for 10 seconds.



IV. TROUBLE SHOOTING

A. The gun doesn't aspirate any product

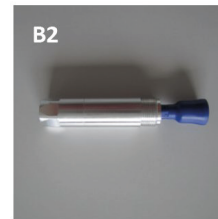
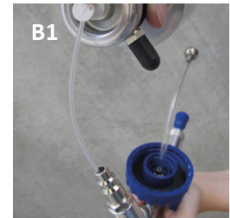
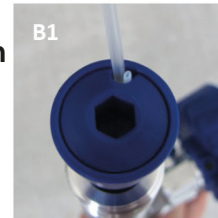
1. Check if the filter of the suction tube is not blocked.
2. If the gun still doesn't aspirate the product, unscrew the rotating part of the gun.
3. Check if the internal tube is not pinched by sliding it through your fingers.
4. If it is pinched, replace it with a new internal tube.



If you follow the maintenance instructions (III) the average lifetime of the internal tube is about 600 hours of operation at 6,3 bar.

B. The blue ball mechanism doesn't rotate

1. Grease the internal tube and the air inlet by using a multifunctional lubricant. Gently turn the blue ball mechanism by hand. Remove your hand and press the trigger for 10 seconds.
2. If the gun doesn't start, replace the bearing assembly + rotating ball

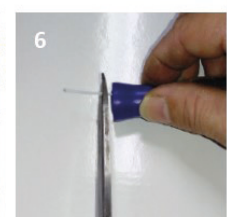
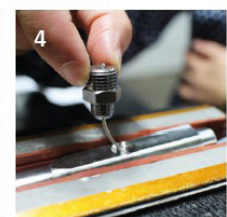


If you follow the maintenance instructions (III) the average lifetime of the rotating parts is about 600 hours of operation at 6,3 bar.

If you can't repair your gun yourself, flush it thoroughly by putting clear water in the bottle and press the trigger for 30 seconds. Send the thoroughly rinsed gun back to the supplier.

V. CHANGING THE INTERNAL TUBE

1. Turn off the bearing assembly (motor set) and unscrew the bottle.
2. Turn the housing upside down and put it on the vice. Then unscrew the reverse valve set with open-end spanner size 14 mm & 16 mm.
3. Unscrew the internal tube set from the aluminium housing with open-end spanner size 14 mm.
4. Install new internal tube set and screw this part with open-end spanner size 14 mm in aluminium housing.
5. Screw the reverse valve set on its place again with spanner size 14 mm & 16 mm, and screw the bearing assembly (motor set) again on its place.
6. Cut off the internal tube so that it remains visible for 1 mm outside the blue ball.



VI. SAFETY INSTRUCTIONS

You must observe the following points in the interest of your own safety!!!

- The Power Twister creates considerable noise pressure. Please wear hearing protection in order to avoid noise which can be damaging to your health.
- When working with the Power Twister, small parts may be whirled into the air: Wear safety gloves and protective goggles to prevent eye injuries.
- The Power Twister nebulises the cleaning liquid very finely. To prevent health hazards from inhalation, wear appropriate respiratory protection.
- Ensure all others in the area are wearing impact-resistant eye goggles, face masks and safety gloves.
- Only use the Power Twister in ventilated spaces.
- Do not use cleaning agents which are acidic, alkali and/or inflammable. We recommend the use of neutral cleaning agents.
- When using cleaning fluids which need to be diluted, always strictly observe the manufacturer's instructions to make sure the mixture is correct.
- Never point the Power Twister towards the face or body of you or anyone else.
- Keep the Power Twister out of the reach of children.
- To reduce risk of injury, everyone using, installing, repairing, maintaining, changing accessories on, or working near this tool must read and understand these instructions before performing any such task.
- This tool and its accessories must not be modified in any way.
- Air pressure below the recommended minimum will not work.
- Always shut off the air hose, the toll from the air, when not in use, before changing accessories or when making repairs.
- A constant flow of air requires the correct size and power of compressor. Always make sure that the tank and the air hoses are free of impurities of any kind.
- Never direct compressed air at yourself or anyone else.
- Hoses can whiplash and cause serious injury. Always check for damaged or loose hoses and fittings.
- Do not exceed maximum air pressure of 8.0 bar or as stated on the name plate.
- Slipping, tripping and falling are the main causes of serious injury or death. Good light and clear work surfaces are essential; eg. Do not leave hoses lying around.
- Operators and maintenance personnel must be physically able to handle the bulk, weight and power of this tool. In addition, make sure you are well balanced and have secure footing.
- This Power Twister is not intended for use in explosive atmospheres and is not insulated for contact with electric power sources.
- Be aware that prolonged use may cause metal fatigue.

We recommend you never clean any safety-related components, e.g. safety belts, electrical or electronic modules, with the Power Twister.

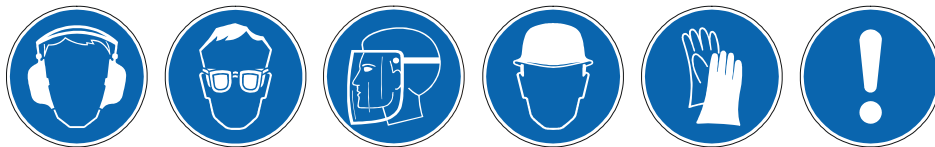


Special instructions

The written and spoken information and recommendations which we provide to support the purchase/user, are the result of previous experience and the latest findings. Because of the manifold possibilities for use and processing conditions, this information is without obligation and does not constitute a contractual legal relationship or any supplementary obligation of the sales contract.

In any event, the purchaser holds responsibility for checking suitability for the intended use himself. Always read the safety warnings for cleaning liquids and contact the manufacturer in case of doubt.

Our liability and responsibility is based exclusively on our general terms and conditions of business and are not expanded on by either this information or the technical advice of our technical field staff.



Explanation of the pictograms

Always use hearing protection, face and eye-protection, dust-mask, if necessary a hair-net, protective gloves and read/ understand the instruction manual before you use the Power Twister.

Technical data

Air inlet	1/4"
Air pressure	4 bar minimum - 8 bar maximum
Air consumption	254 l/min at 6,3 bar
Weight	0,7 kg
A-weighted sound pressure level (LpA) at workstation	89.4 dB (EN 14462+A1)
A-weighted average sound pressure level (LpA)	88.3 dB (EN 14462+A1)
A-weighted sound power level (LwA)	99.3 dB (EN 14462+A1)
C-weighted sound pressure level at workstation in dB (C) (LpC, peak)	89.5 db (EN14462+A1)
Declared vibration value, adh	1.44 m/sec ² (EN ISO 20643)
Uncertainty, K	0.64 m/sec ² (EN ISO 20643)
Serial number	See label on the gun